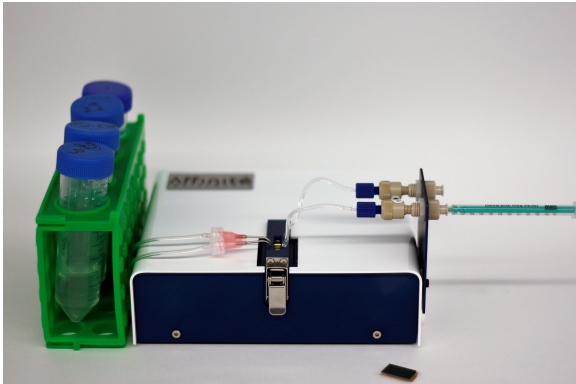




# Surface Plasmon Resonance

Accelerating Biotherapeutic Discovery | Understanding Pathways | Elucidating Mechanism

## EASY ACCESS TO SPR TO HELP SCIENTISTS UNCOVER BIOLOGICAL PROCESSES

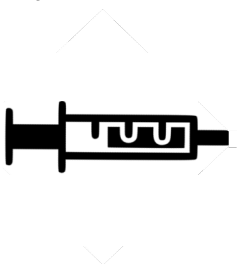


Label-free testing requires little to no sample preparation and, thanks to a compact design, can be performed at your bench. Simultaneous SPR analyses are conducted with three sample channels along with a reference channel.

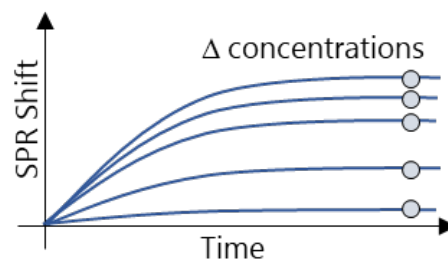
This device is perfect for fundamental research, academic teaching and biotherapeutics quality control.

## HOW IT WORKS

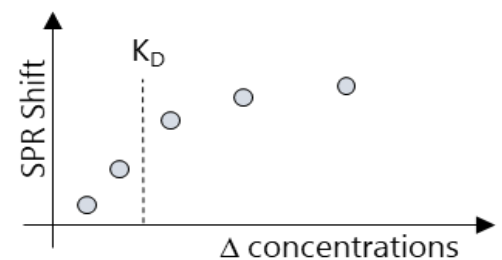
### 1. Inject Sample



### 2. Monitor in Real-Time



### 3. Analyze Data



## DATA PER TEST

- Qualitative Yes / No Binding
- Binding Affinity
- Kinetics
- Specificity
- Concentration

## KEY BENEFITS

- Label-Free Sensing
- Real-Time Monitoring
- Cost Effective
- Multi-Channeled Microfluidic
- Simple Operation
- Low Maintenance
- Small Footprint

## CONTACT US

For technical inquiry, demo and quote on starting kit: [info@affiniteinstruments.com](mailto:info@affiniteinstruments.com)  
Visit [www.affiniteinstruments.com](http://www.affiniteinstruments.com) for more details